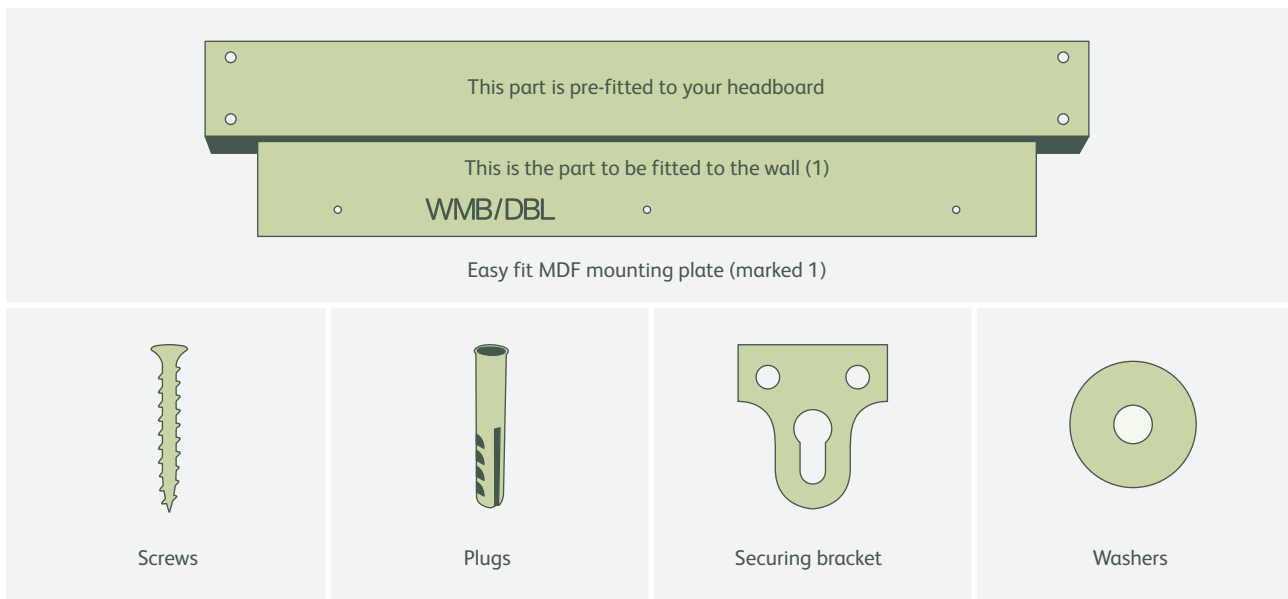


## Easy Fit Wall Mounting Pack

# Fitting Instructions

### With your order you will receive:



### To do this job you need

- 1 x Pencil
- 1 x Spirit level
- 1 x Tape Measure
- 1 x Drill with a 7mm drill bit
- 1 x Pozidrive screwdriver

### Here's what to do

First, mark on the wall above your bed where to mount the plate. It is very important that you follow these instructions exactly as this will ensure that your headboard ends up hanging above your bed with the base of the headboard just touching your mattress. If you have a plasterboard wall then you **MUST** go to your local DIY store and buy special plasterboard wall fixings, the wall plugs supplied will not be safe and you **MUST NOT** use them. They are designed for solid walls only. All good local DIY/hardware stores have plasterboard wall fixings and you should ask their advice. If you are in any doubt you should get a qualified fitter/handyman to fix your headboard.

### Getting the first holes in the right place

For ALL 24ins (61cm) high headboards, and Annet, Bardsey, Bryher, Caldey, Cardigan, Puffin, Samson and Tresco models, the centre hole in the MDF wall mounting plate (see 1, above) is to be 14¼ inches (360mm) above the mattress. For ALL other models the hole is to be located exactly 21¼ inches (540mm) above the mattress.

## Step 1

Place the bed where you want it to go. Make a small pencil mark on the wall in the centre of your bed at the same height as the top of your mattress. Now pull the bed away from the wall.

- **For ALL 24ins (61cm) high headboards, and Annet, Bardsey, Bryher, Caldey, Cardigan, Puffin, Samson and Tresco models only**

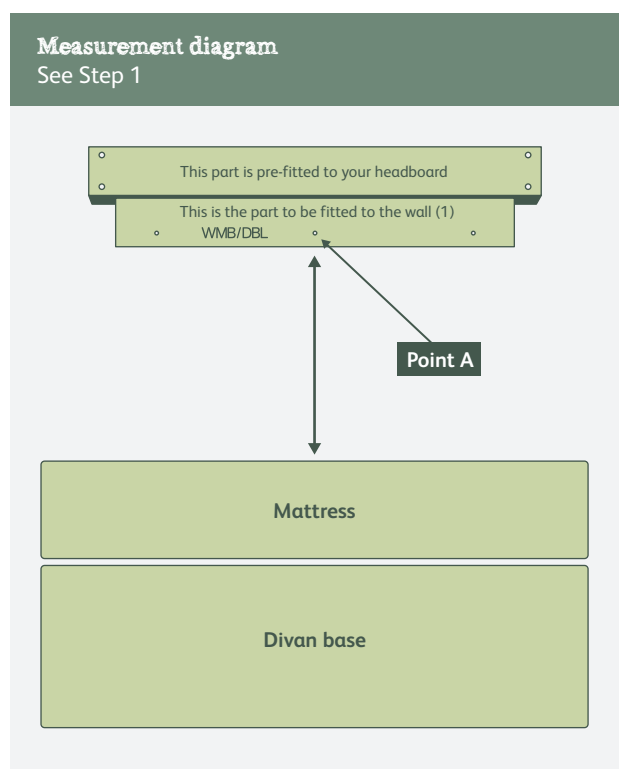
Measure a vertical distance of exactly 14¼ inches (360mm) from the point that you have just marked (the top of the mattress). Mark this Point A.

- **For all other models except those named above**

Measure a vertical distance of exactly 21¼ inches (540mm) from the point that you have just marked (the top of the mattress). Mark this Point A.

## Step 2

Now drill a 7mm hole at point A and insert a wall plug into it. Ensuring that the letters on the MDF board are the right way up and legible, place the plate on the wall and insert the screw through the washer provided, then through the centre hole in the plate and into the plug you have just inserted at point A. Tighten the screw until it is firmly in place, but not too tight. Place a spirit level on the MDF plate and level it.



## Step 3

Now mark through all the holes in the board provided with a pencil. Swing the plate out of the way, (just enough) so you can drill 7mm holes at each point you have marked and insert the wall plugs into the holes in the wall (or special plasterboard fixings if you have a plasterboard wall). Check again that the letters are the correct way up and legible and then fix the plate on the wall using all screws and washers provided.

## Step 4

Fixing the headboard securing bracket and mounting your headboard on the wall.

It is very important that BEFORE you put your headboard on the wall you locate the headboard securing bracket that is located at the centre of the base of your headboard and finally lock it into position with a second screw.

For transit (and to avoid damage) this small bracket is only secured with one screw and it needs to be secured with a second screw.

Placing your headboard face down locate the securing bracket, swing it into position and lock it in place with the second screw.

## Step 5

Pick up your headboard and hold it so it is some 3ins (75mm) above the position it is to be located and whilst holding it against the wall, slide it down onto the plate, the action will pull the headboard into the wall. You can slide it a little way from side to side to adjust it, so it is finally positioned correctly. Check that you are happy with this position.

Now locate the securing bracket that you have just locked into position at the bottom of the centre of the headboard and mark with a pencil where the hole in the centre of it is. Remove the headboard. Drill a 7mm hole and insert a wall plug where you have marked the hole. Place the headboard back in position and insert a screw through the hole in the securing bracket and into the wall plug. Ensure it is tightly secured. It is ESSENTIAL that you fix this securing bracket otherwise there is a risk of your headboard lifting and falling off the wall and injuring someone.

